

Accessories - Sensor - netlife module for pirola

Housing with a smooth surface made of polycarbonate. Cable entry on front with twist-fix bayonet closure; with click-lock catch on the side. Housing colour white, similar to RAL 9003; Light Control: netlife easy45; Regiolux Classification: netlife easy; Control signal: DALI broadcast; Number of control gear (max): 15; Communication: Wired; Sensor technology: HF - high frequency; Installation height (min/max): 1m to 4m; Monitoring area: max. D=8m; Remote control: 84501101202; Application: Corridors, Garages, Secondary rooms; Function: Motion detection, Corridor function, Daylight control. Sensor luminaire surface-mounting set for pirola DALI;

CHARACTERISTICS

Order number	50119002100
EAN number	4020863391103
Commodity code	85365080
Certification mark	IP 65, Protection class I, F, D, Indoor, CE
Impact resistance (IK rating)	IK08 (-20°C bis 45°C)
Ambient temperatur	ta -20°C to 45°C
Warranty period	5 years

ELECTRICAL ENGINEERING

System output	1W
Mains voltage	230V/50Hz

LIGHTING TECHNOLOGY

LED service life	10000h (Tq 45°C)
------------------	------------------

MECHANICS

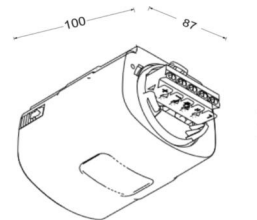
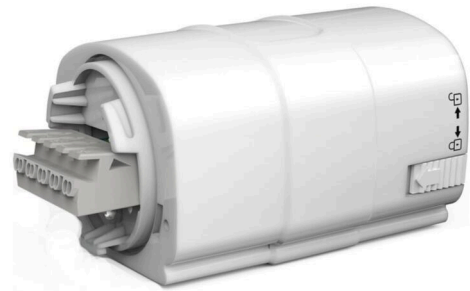
Housing colour	white, similar to RAL 9003
Dimensions (LxWxH/DxH)	100mm x 87mm x 66mm
Weight (net)	0.27kg
Cable entry KE	at the end
Type of installation	Ceiling-mounted single installation, Pendant individual mounting, Wall mounting, Mounting rail installation

Dimensions

L	100 mm	Length
B	87 mm	Width
H	66 mm	Height

DEEP-LINK

<https://www.regiolux.de/en/article/50119002100>



LC SYSTEM

CHARACTERISTICS

Regiolux Classification	netlife easy
Control signal	DALI broadcast
Number of control gear (max)	15
Communication	Wired
Sensor technology	HF - high frequency
Installation height (min/max)	1m to 4m
Remote control	84501101202
Application	Corridors, Garages, Secondary rooms
Function	Motion detection, Corridor function, Daylight control

